

Border Ranges Rainforest  
Biodiversity Management Plan

NSW & Queensland

March 2010



# Border Ranges Rainforest Biodiversity Management Plan (NSW & Queensland)

## A National Regional Recovery Plan

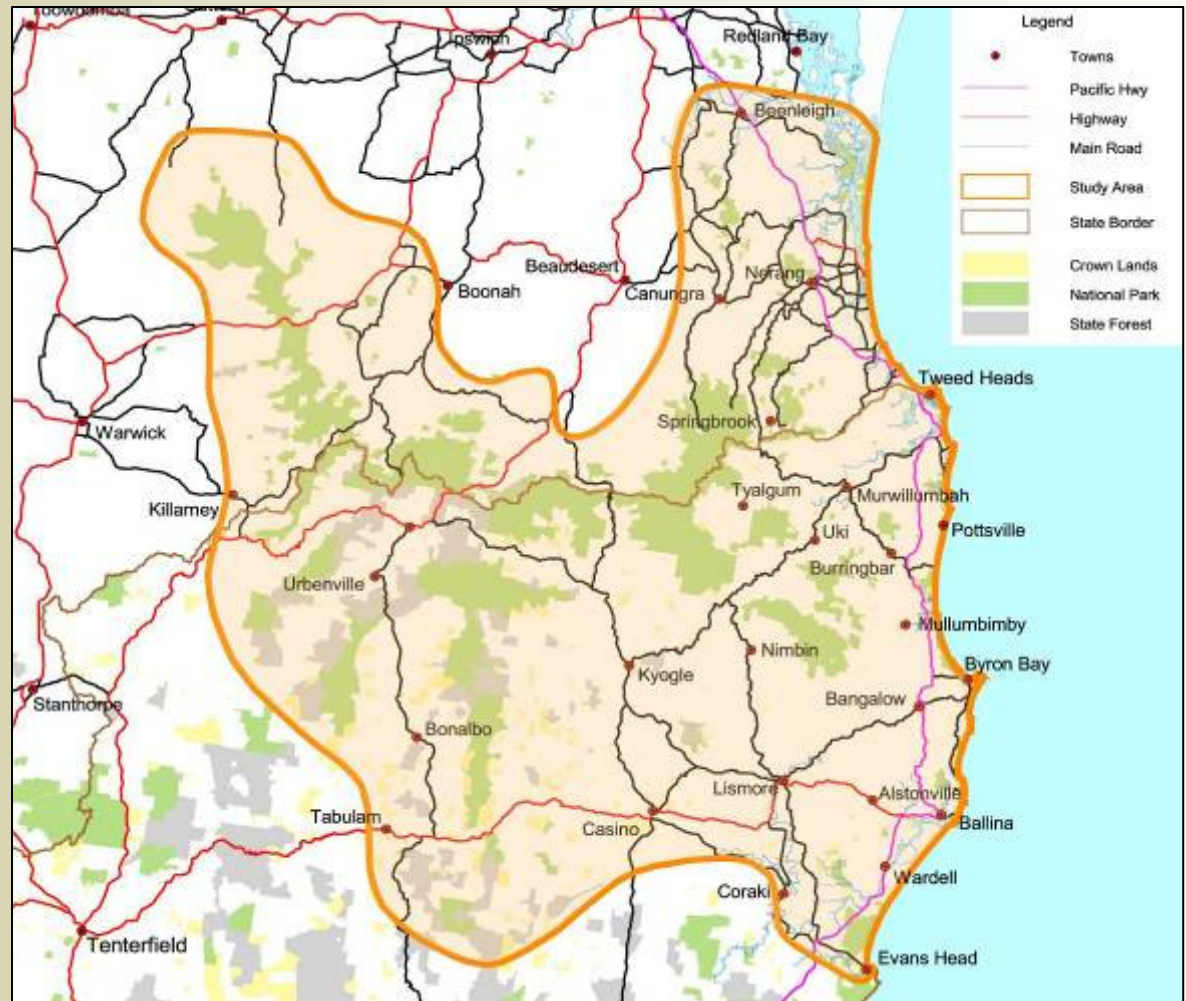


# Border Ranges Integrated Biodiversity Project

- Australian Government Pilot
- Involved
  - NSW Northern Rivers CMA
  - Australian Government Department of the Environment, Water, Heritage and the Arts
  - SEQ Catchments
  - Qld Department of Environment and Resource Management
  - NSW Department of Environment, Climate Change and Water
  - Gondwana Rainforests of Australia WHA/Griffith University
  - Local Government
  - South East Queensland Fire and Biodiversity Consortium
  - Community representatives and consultants
  - North Coast Weeds (NSW)

# Planning Area

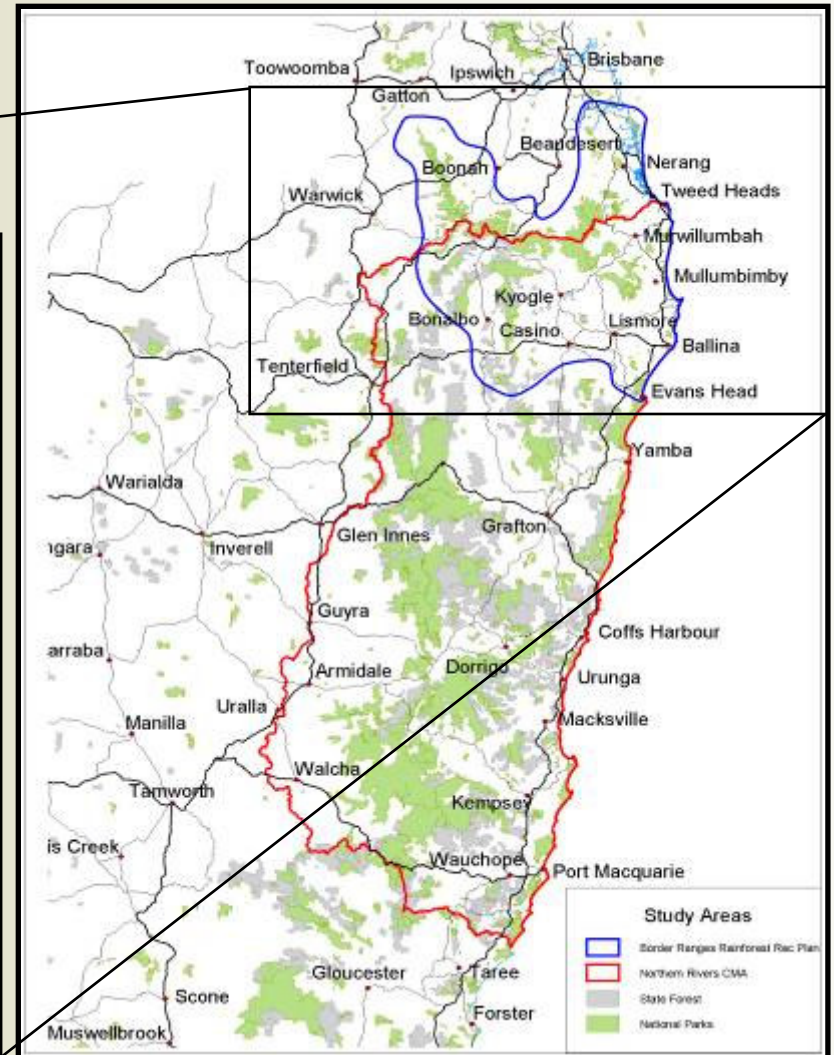
- Rainforest and associated vegetation
- Cross-border, NSW and Queensland
- 292,000 hectares
- 37% freehold



# Regional context



Border Ranges Rainforest BMP



Northern Rivers Regional BMP



# Priority species and ecological communities

- 107 fauna species
  - Freshwater aquatic fauna included
  - Threatened and non-threatened
- 166 flora species
  - Threatened and non-threatened
- 25 threatened ecological communities or Qld regional ecosystems



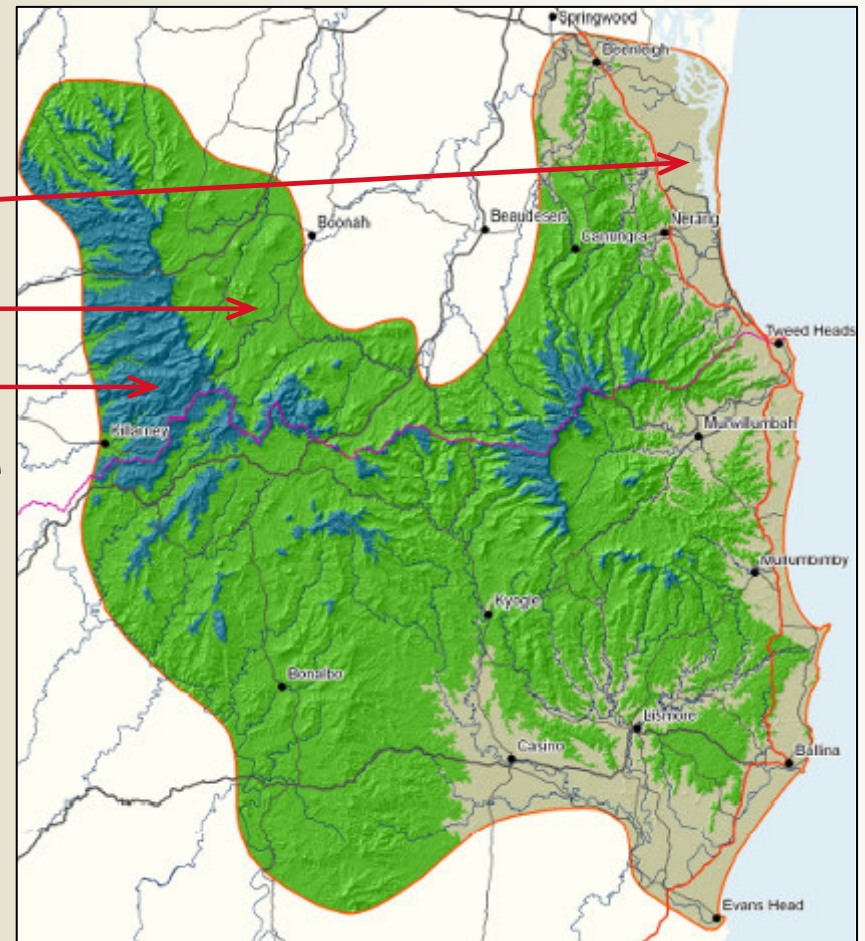
# Threat-based management of biodiversity

- Focus on regional, prioritised threat-based recovery
  - Planning Area broadest spatial and biological extent for threat or group of threats
- Threats grouped and categorised
  - Universal: Overarching threats that exacerbate other threats E.g. Climate change
  - Regional: Spatial threats that may vary in extent and severity across Planning Area



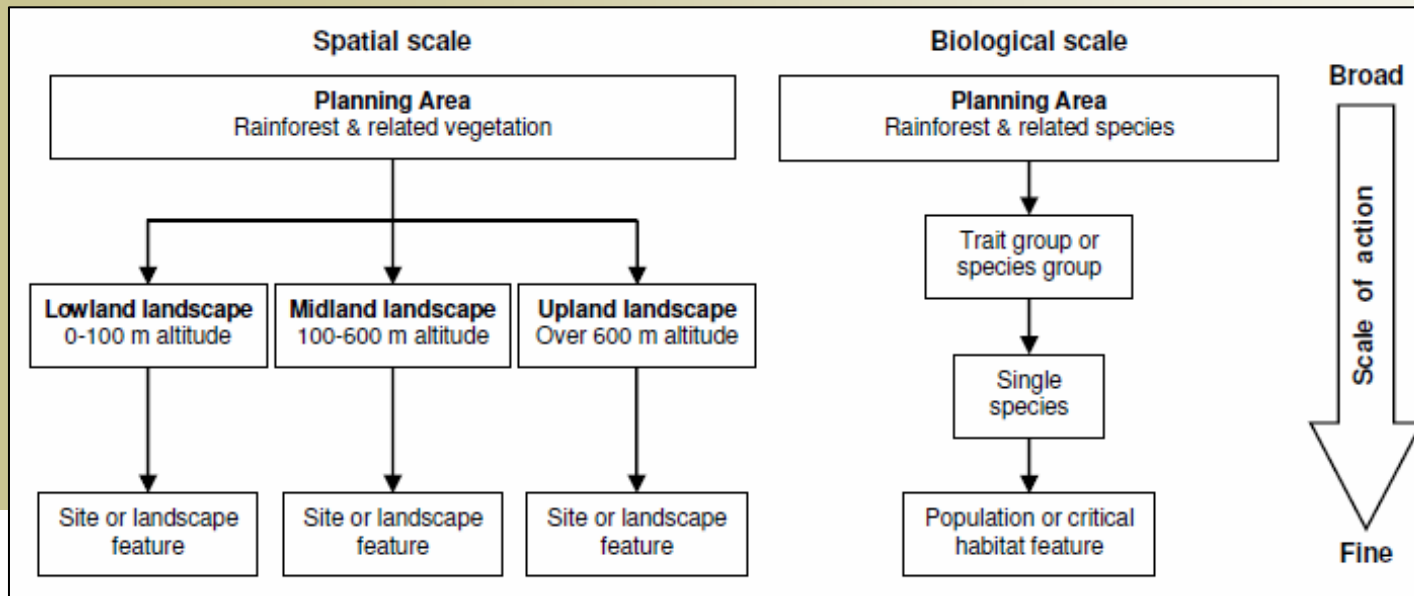
# Threats assessed at a range of scales

- Planning Area
- Landscapes identified to reflect extent and severity of threats
  - Lowland
  - Midland
  - Upland
- Finer biological and spatial scale
  - Species
  - Population
  - Site
  - Critical habitat feature



# Actions

- Group similar actions and apply at broadest scale appropriate
- If threat is not adequately covered, formulate action at finer localised scale
- Integrate with and support existing programs and strategies where possible (e.g. TAPs, pest strategies)



# Accounting for single species

Action scale

**Region**

**e.g. General planning  
action**



**Landscape**

**e.g. Broad restoration project**

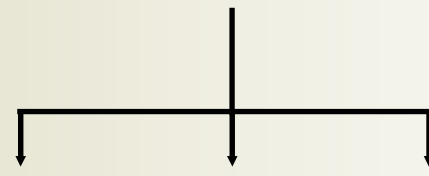


**Critical feature or site**

**e.g. Specific restoration project**

Grey-headed flying-fox

**Border Ranges**



**Upland**

**Midland**

**Lowland**

**Maternity  
camps**



## Plan Outputs

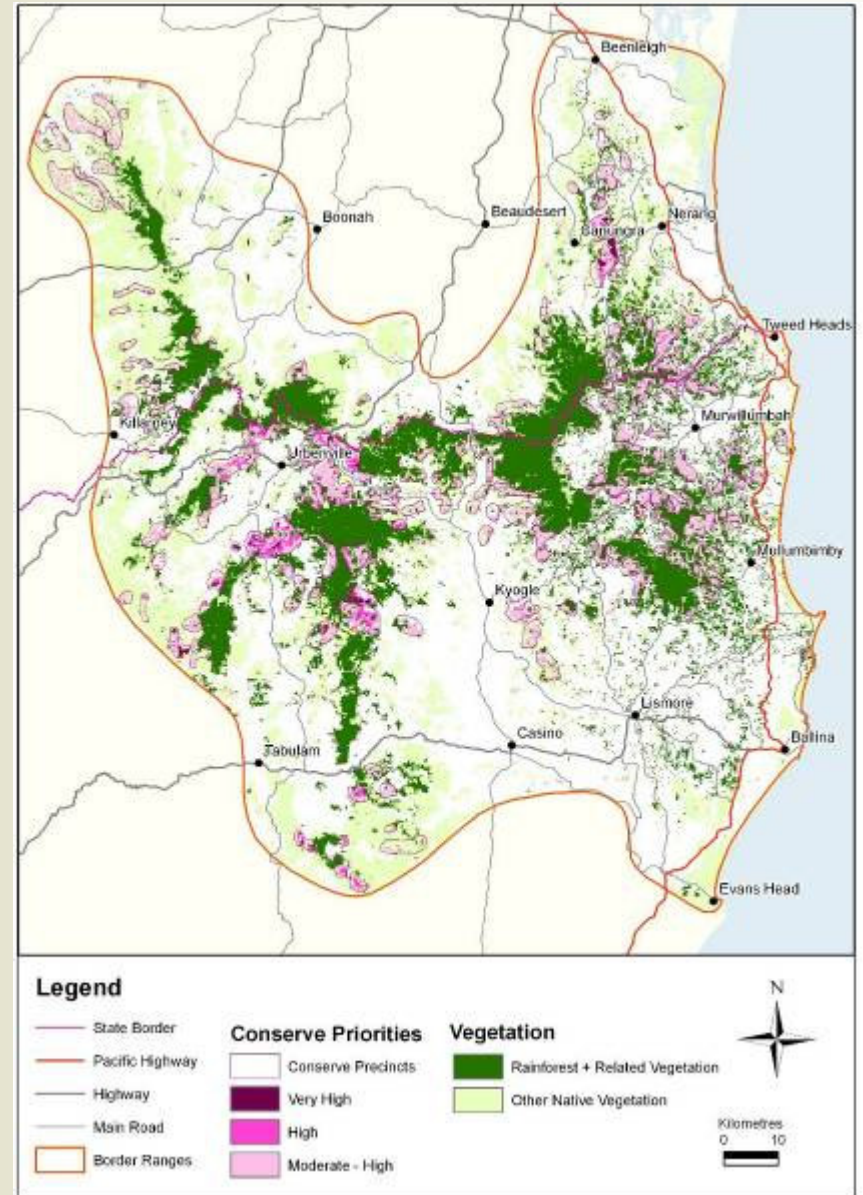
- Prioritised Recovery objectives and actions based on threats ranked at Planning Area scale
- Actions for variety of potential users
- Actions that address threats at most appropriate geographical and biological scales
- Actions linked to mapped areas of importance based on several prioritisation processes

## Spatial priorities

- Areas of particular importance and focus for recovery actions
- Areas to be considered for actions. May be further refined or provide guide to implementation
- Identified through:
  - Modelling
  - Expert identification e.g. Fauna refugia
  - Community input e.g. Big Scrub remnants, Qld Bahrs Scrub
  - Existing reports and plans e.g. NSW Bitou Bush TAP priority sites
  - Statutory e.g. Mitchell's Rainforest Snail Critical Habitat

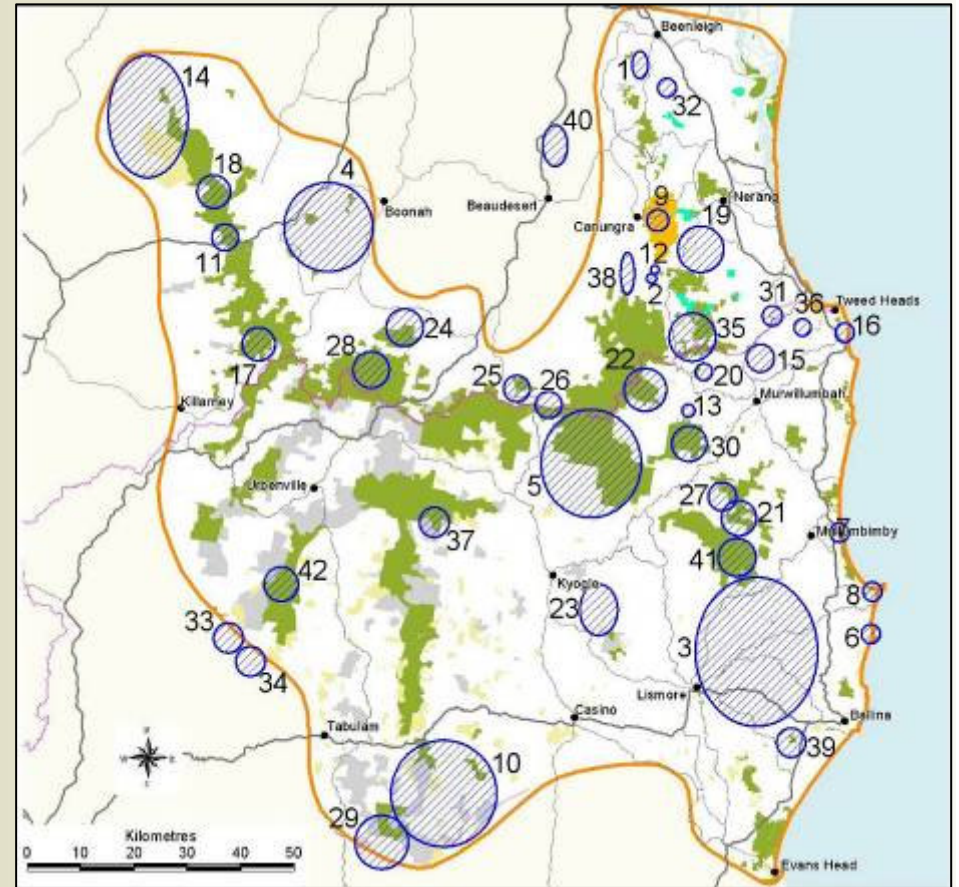
# Modelled Priorities

- Modelled priorities
- “Conserve”
  - Areas that, if lost, would have the greatest impact on biodiversity of the Region
- “Repair”
  - Areas that, if restored, would contribute the greatest biodiversity gains to the Region



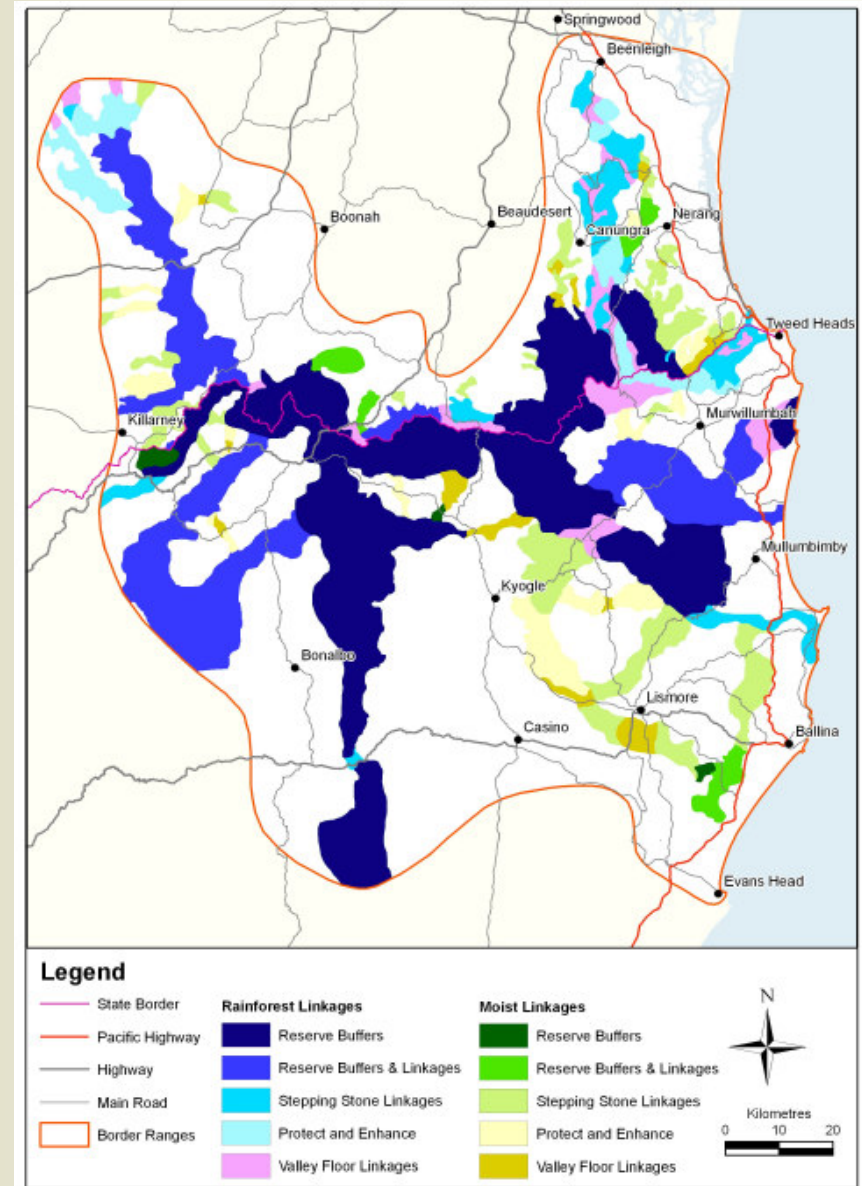
# Priorities identified by community

- Identified through community engagement
- Areas not necessarily picked up by Biodiversity Forecasting Tool (e.g. Big Scrub)
- Acknowledge significant level of conservation work and community ownership of projects across Planning Area



# Climate Change

- Overarching threat that exacerbates other threats
- Incorporate potential climate change impacts into priorities and actions for other threats
  - E.g. Climate change connectivity and corridors



## Current status of Plan

- Approved as a National Recovery Plan in March 2010
  - Complies with requirements of a Recovery Plan under Commonwealth legislation (EPBC Act)
- <http://www.environment.gov.au/biodiversity/threatened/publications/recovery/border-ranges/>
- Plan continues to be implemented

# Using the Plan

- Directly
  - Background resource
  - Identify actions or locations for implementation
  - Integration with planning instruments (e.g. LEPs, LGA Biodiversity Management Strategies)
  - Prioritising integrated delivery projects with partners e.g. Steering Committee
- Indirectly
  - Applying for funding
  - Targets
  - Supporting NRM reviews

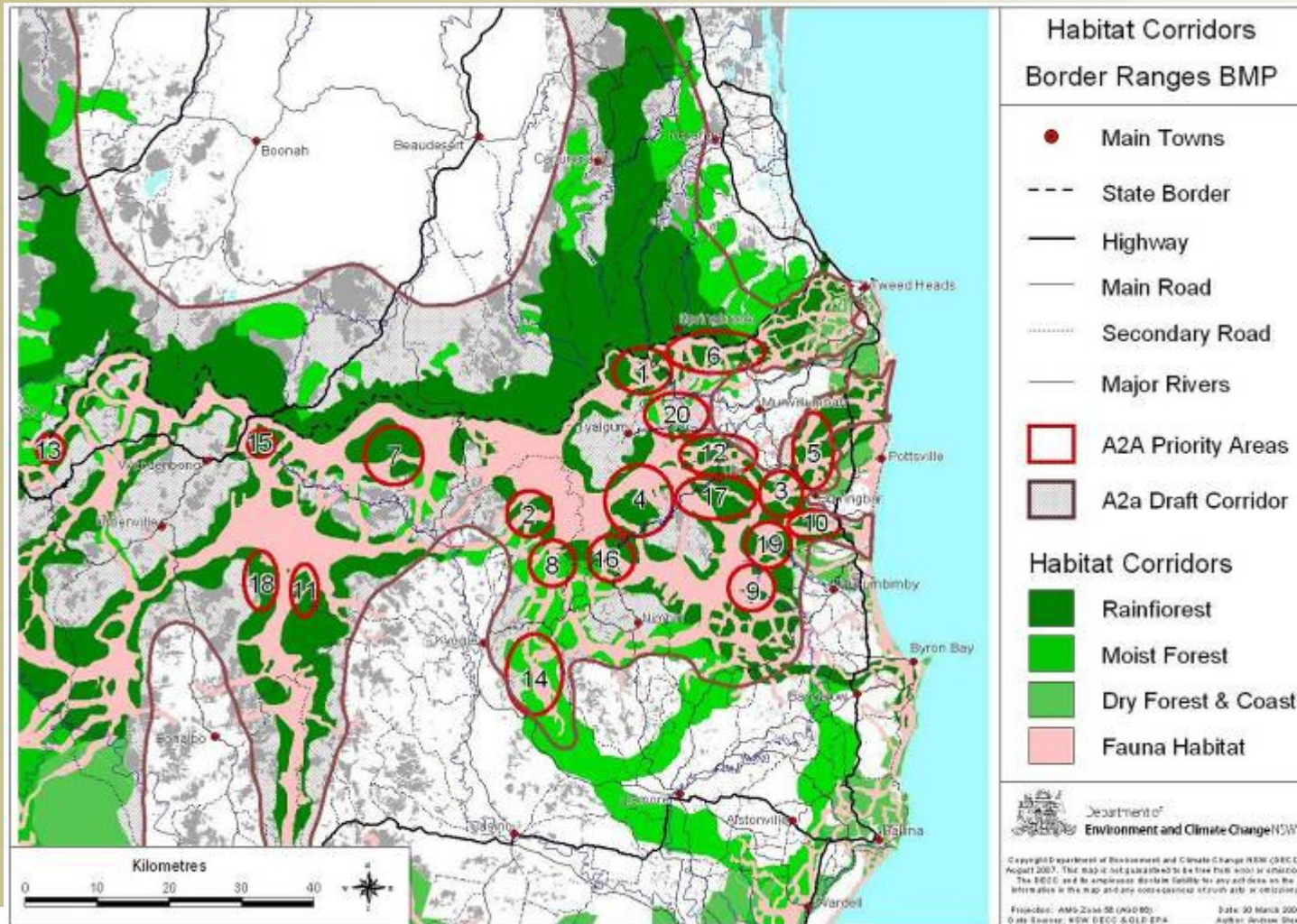
## Existing partnerships

- Implementation overseen by NSW Northern Rivers and Border Ranges Biodiversity Steering Committee
  - Queensland representation through SEQ Catchments and Department of Environment and Resource Management
  - Has links to Great Eastern Ranges Border Ranges Alliance Working Group

# Potential partnerships

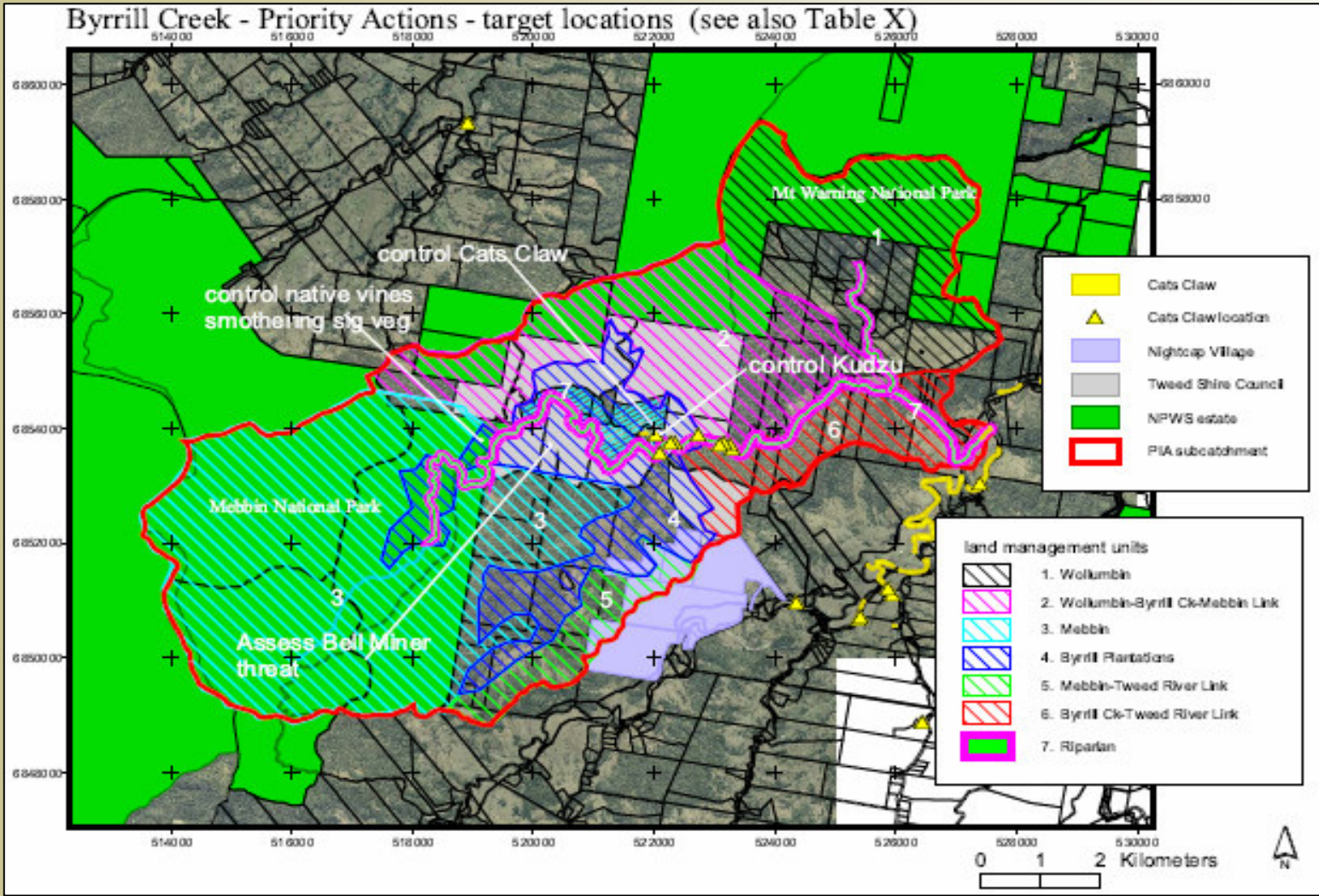
- Steering Committee
  - Supports integrated delivery
  - Supports Cross-border approach
  - Interested in any additional opportunities for partnerships

# Great Eastern Ranges Initiative Border Ranges Priority Areas

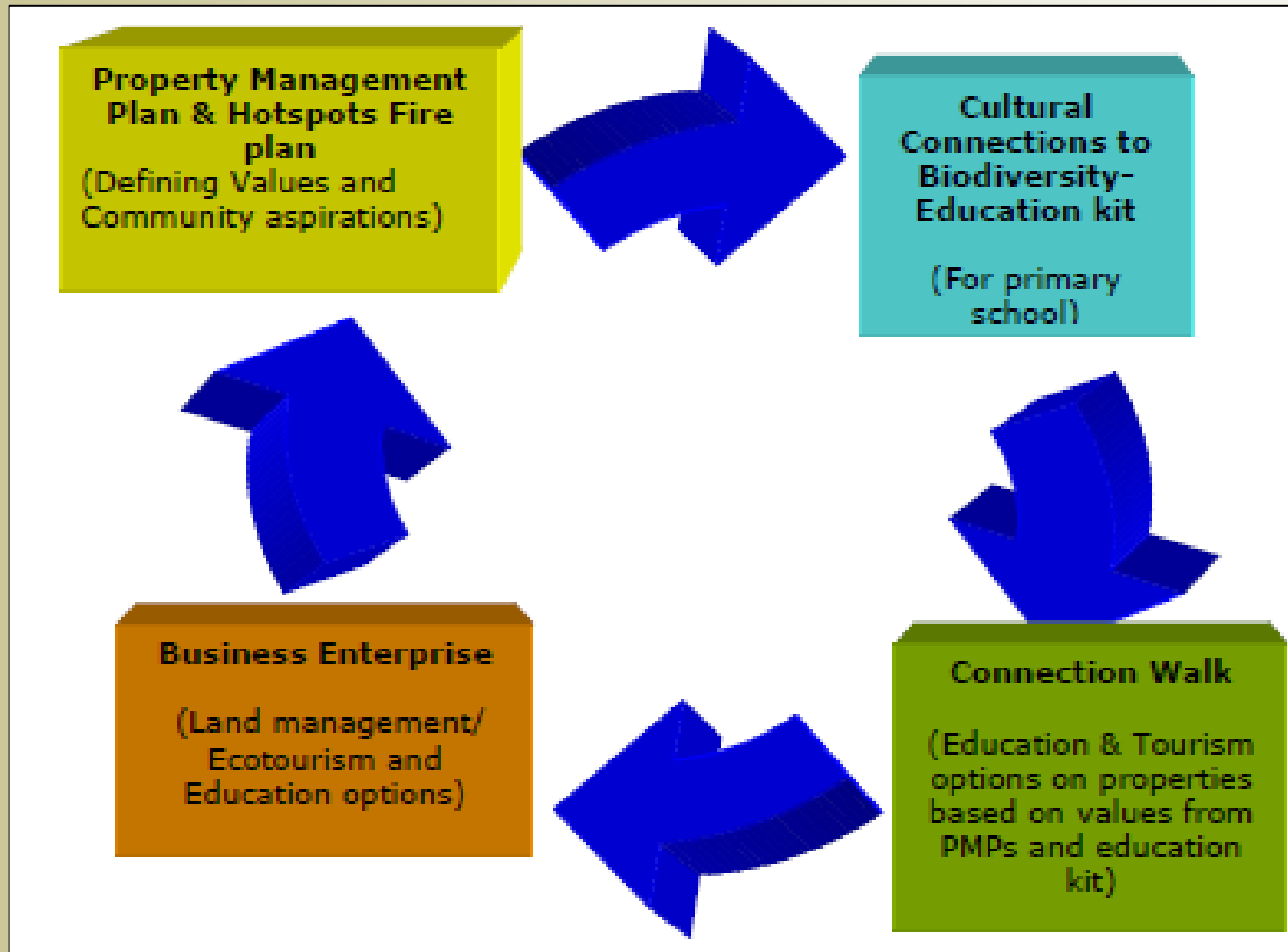


Department of Environment, Climate Change and Water

# Sub-catchment Integrated Threat Management

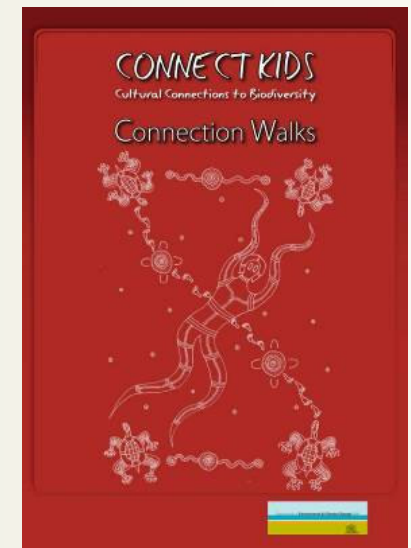
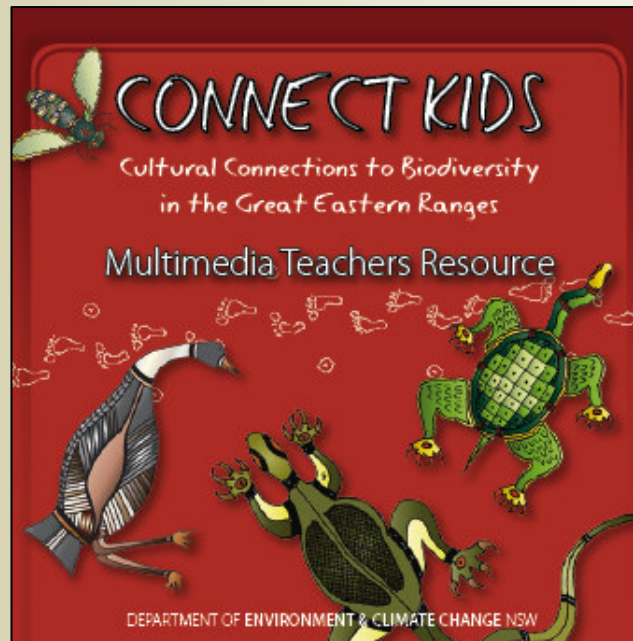


# Cultural Connections Toolkit



# Cultural Connections Toolkit

- Indigenous Property Management Plans
- Threatened Species and Cultural Connections Education Kits



## Other projects

- Exploring feasibility of a NSW Northern Rivers Fire and Biodiversity Consortium similar to South East Queensland Fire and Biodiversity Consortium
- Developing a monitoring and evaluation framework for the overall Plan

## The future?

- Steering Committee is committed to long term role representing NSW and Qld
  - Integrated partnership-based delivery of actions into the future
- Integrating BMP with other planning documents
- Partnership possibilities?